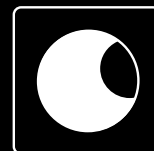


Take a closer look...

IFIS-SA – The Complete fMRI Solution

for Research and Clinical Applications



**MRI
Devices
Corporation**

Integrated Functional

The Integrated Functional Imaging System-*IFIS-SA™* is the first comprehensive, user-friendly solution for functional MR imaging (fMRI). The system includes a LCD visual display, crystal clear audio, head stabilization, motor response keypads, and high performance head array coil. The software includes experiment creation, patient management, patient assessment, protocol planning and behavioral data analysis.

MAGNET ROOM COMPONENTS



An integrated set of MRI compatible components support a wide range of functional imaging experiments for visual, auditory, and motor tasks. Efficient setup provides fast, routine, high yield functional imaging.

- Fiber optic transmission of all signals between the magnet and control rooms
- High brightness, high resolution visual display
- High performance auditory system
- Left and right hand button response units
- Patient head stabilizer
- RF monitor to synchronize IFIS-SA with the MR scanner
- Patient microphone

CONTROL ROOM CONSOLE

Dual computers for experiment control and analysis are fully integrated for ease of use and high performance. They provide the computing power required to generate, present, analyze and archive functional MRI experiments while maintaining millisecond level experiment control. The system provides real time experiment display, simple operation, patient data management, and patient entertainment.

- Dual LCD monitors for fMRI control and patient monitoring
- Operator camera and operator to patient microphone
- Master control unit for magnet room communication
- Experiment presentation computer
- fMRI control and analysis computer
- Integrated rack system for use in control or equipment room

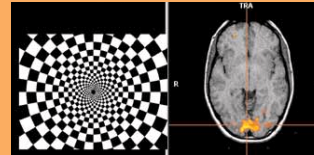


Achieve critical

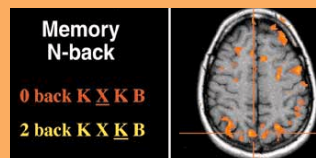
CLINICIANS get high yield, robust patient functional mapping

RESEARCHERS implement and execute cutting edge research

VISUAL RESPONSE



MEMORY MAPPING



Imaging System

your goals:

TECHNOLOGISTS
perform complete
fMRI studies easily

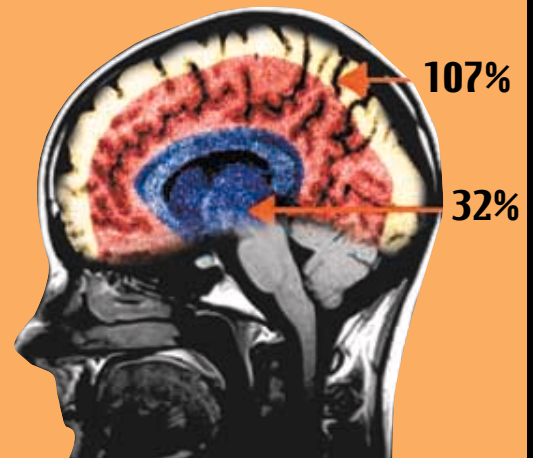
PATIENTS
a pleasant scanning
session that yields
effective results

HIGH RESOLUTION HEAD ARRAY

This is the first high field high resolution head coil optimized for functional imaging. It provides the optimal SNR critical to fMRI and is fully integrated with IFIS-SA's video display, auditory system, and head stabilizer. This coil will dramatically improve your fMRI performance.



SNR GAIN



- Multiple channel phased array performance transmit and receive optimized
- Dome design
- Large open view windows
- Designed specifically for fMRI
- Available for most high field MRI systems
- Advanced imaging applications

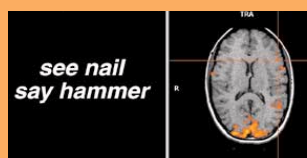
MOTOR RESPONSE



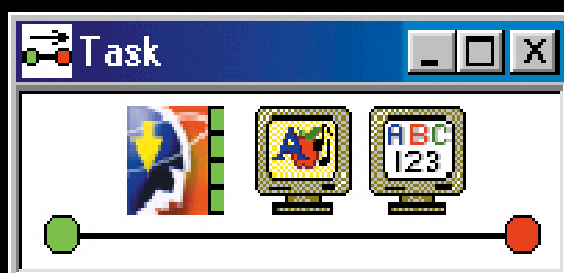
TASK GENERATOR & EXPERIMENT DEVELOPMENT STUDIO



LANGUAGE MAPPING



The IFIS-SA integrated software suite allows rapid creation of precise fMRI experiments. Paradigms are developed with IFIS-SA enabled E-Prime, the most comprehensive, precise and easy-to-use experiment generation system. E-Prime is a complete suite of applications including: E-Studio a graphical experiment design environment, E-Basic a general purpose scripting language, E-Run a real time experimental presentation engine which provides millisecond precision, and E-Merge/E-DataAid which can merge, view, filter, analyze, edit, and export analysis results to other functional and behavioral analysis programs.



- Specialized IFIS-SA environment for functional imaging paradigm development
- Millisecond level experiment timing
- Graphical user interface and experiment creation wizards
- Comprehensive Visual Basic language with over a thousand experiment ready routines
- Multi-threaded real-time E-Run
- Fast and easy behavioral data analysis
- Complete experiment data logging



**MRI
Devices
Corporation**

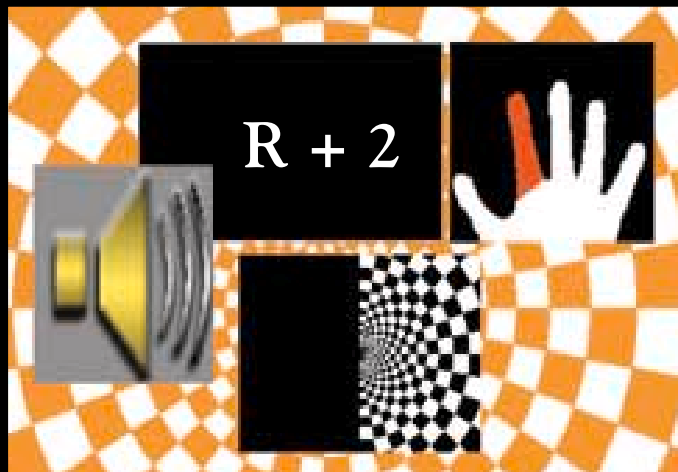
1515 Paramount Drive
Waukesha, WI 53186

MRI Devices Corporation
supplies high performance
coils and a complete
Integrated Functional
Imaging System (IFIS) to
both OEM system
manufacturers and directly
to hospitals, clinics, and
research institutions.

IFIS-SA fMRI PARADIGM SUITE

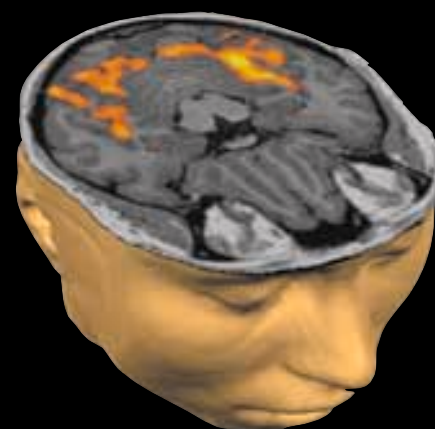
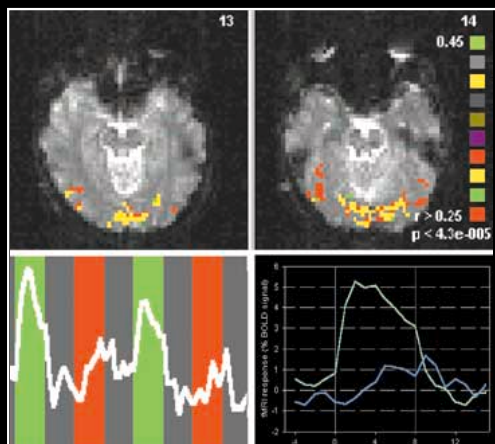
The IFIS-SA paradigm suite provides a basic set of behavioral tasks that provide reliable proven fMRI activation. The classic paradigms can be used immediately upon installation for patient assessment or to evaluate new scanning methods. Use the IFIS-SA library of pre-designed tasks to activate visual, motor, language and memory areas or as building blocks to assemble your own custom paradigm.

- Standard paradigms for instant functional imaging
- IFIS-SA experiment creation wizard
- Extensive tools to create custom fMRI experiments
- Real time links to *TurboBrainVoyager™*



FUNCTIONAL DATA ANALYSIS TURBO BRAIN VOYAGER

IFIS-SA comes integrated with the TurboBrainVoyager software package – the most advanced high performance tool for statistical pattern mapping of functional data and fMRI data visualization. The optional full BrainVoyager 2000 package provides advanced analysis tools. Sophisticated 2D and 3D visualization options include activation movies, slice views, folded, inflated and flattened brain representations.



For Info

Waukesha, WI
Phone: 800.524.1476
Fax: 262.524.1403
E-mail: info.ifis@mridevices.com
www.mridevices.com

In Europe

MRI Devices Europe GmbH
Würzburg, Germany
Phone: +49(931)299-2727
Fax: +49(931)299-2720
E-mail: info@mridevices-e.com

If you are interested in more information, please contact us.