

NEUROVASCULAR

Neurovascular Array Coil - 1.5T



Applications

The Philips Intera Neurovascular Array Coil is designed for proton imaging and is intended for imaging of the brain, cervical spine, anterior neck and vasculature in the head and neck.

Operational Features

- Advanced 4-channel quadrature array design produces superior resolution images of the entire brain, cervical spine, soft tissues of the neck, brachial plexus, and upper chest to the aortic arch.
- The sensitive volume is 44cm. in the H/F direction, with uniform signal intensity throughout the entire field of view.
- New split top design increases ease of patient positioning, and includes multiple coil openings and an adjustable mirror to reduce claustrophobic responses.
- Exam times reduced as much as 50% over standard head and neck coils.
- Complete brain and neck imaging without patient repositioning or coil changes.



Components

Neurovascular Array Coil
Patient Comfort Pad
Operator's Manual

Compatibility

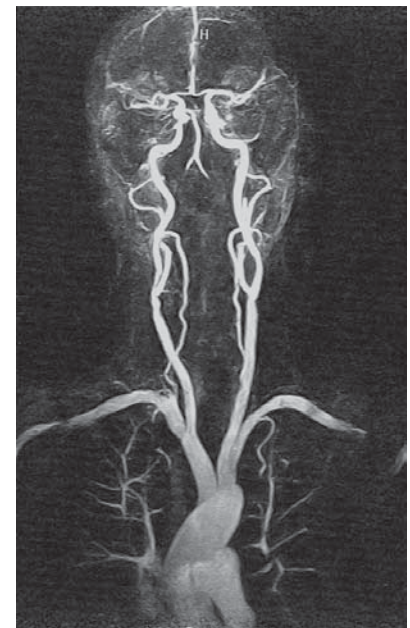
The Neurovascular Array Coil is available for Philips Intera NT 1.5T MRI systems with Release 8.1.1 software or higher.

Requires Synergy MultiConnect (SMC) available from Philips Medical Systems or MRI Devices Corporation.

<u>Description</u>	<u>Catalog #</u>
1.5T Philips Intera NVA	800229

<u>Description</u>	<u>Part #</u>
Synergy MultiConnect	900661

Synergy MultiConnect



Warranty

The product warranty covers defects in materials and workmanship for a period of three years from date of purchase.

In U.S.A.
Waukesha, WI
Phone: 800.524.1476
Fax: 262.524.1403
E-mail: info@mridevices.com
www.mridevices.com

In Europe
MRI Devices Europe GmbH
Würzburg, Germany
Phone: +49(931)299-2727
Fax: +49(931)299-2720
E-mail: info@mridevices-e.com

MRI Devices Corporation Quality System is Certified to ISO 9001 and ISO 13485



**MRI
Devices
Corporation**



Product design and specifications are subject to change without notice